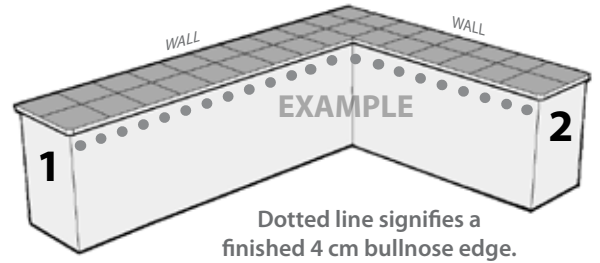


L-SHAPED COUNTER

Your kitchen layout and component totals depend on which edges of your counter either have a 4 cm finished edge or meet a wall/appliance. Edges are numbered in the image at right. All examples show standard 24" countertops with 90 degree installations.

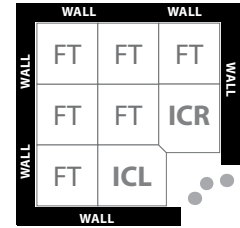
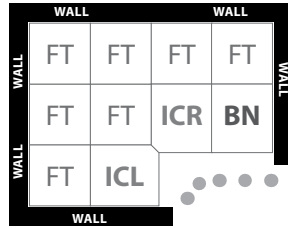


3' x 4' / 4' x 3'

3' x 3'

STANDARD LAYOUT (NO EDGES 1 & 2)

Only front edges are finished; all others meet a wall.

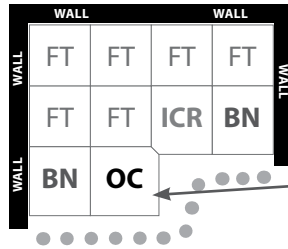


OC 0	BN 1	ICL 1	ICR 1	FT 7
OUTSIDE CORNER	BULL NOSE	INSIDE CORNER LEFT	INSIDE CORNER RIGHT	FIELD TILE

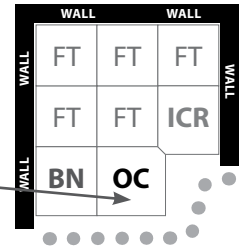
OC 0	BN 0	ICL 1	ICR 1	FT 6
OUTSIDE CORNER	BULL NOSE	INSIDE CORNER LEFT	INSIDE CORNER RIGHT	FIELD TILE

EDGE 1 (OR EDGE 2) FINISHED

Edge 1 option is shown, but this layout can be used for Edge 2 as well by switching the corners.



NOTE:
These Outside Corner pieces require additional cutting

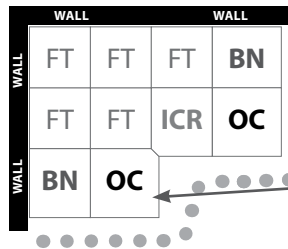


OC 1	BN 2	ICL 0	ICR 1	FT 6
OUTSIDE CORNER	BULL NOSE	INSIDE CORNER LEFT	INSIDE CORNER RIGHT	FIELD TILE

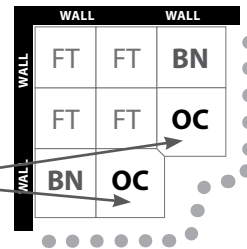
OC 1	BN 1	ICL 0	ICR 1	FT 5
OUTSIDE CORNER	BULL NOSE	INSIDE CORNER LEFT	INSIDE CORNER RIGHT	FIELD TILE

BOTH EDGES 1 & 2 FINISHED

Both Edges 1 and 2 are finished in this layout.



NOTE:
These Outside Corner pieces require additional cutting



OC 2	BN 2	ICL 0	ICR 1	FT 5
OUTSIDE CORNER	BULL NOSE	INSIDE CORNER LEFT	INSIDE CORNER RIGHT	FIELD TILE

OC 2	BN 2	ICL 0	ICR 0	FT 4
OUTSIDE CORNER	BULL NOSE	INSIDE CORNER LEFT	INSIDE CORNER RIGHT	FIELD TILE